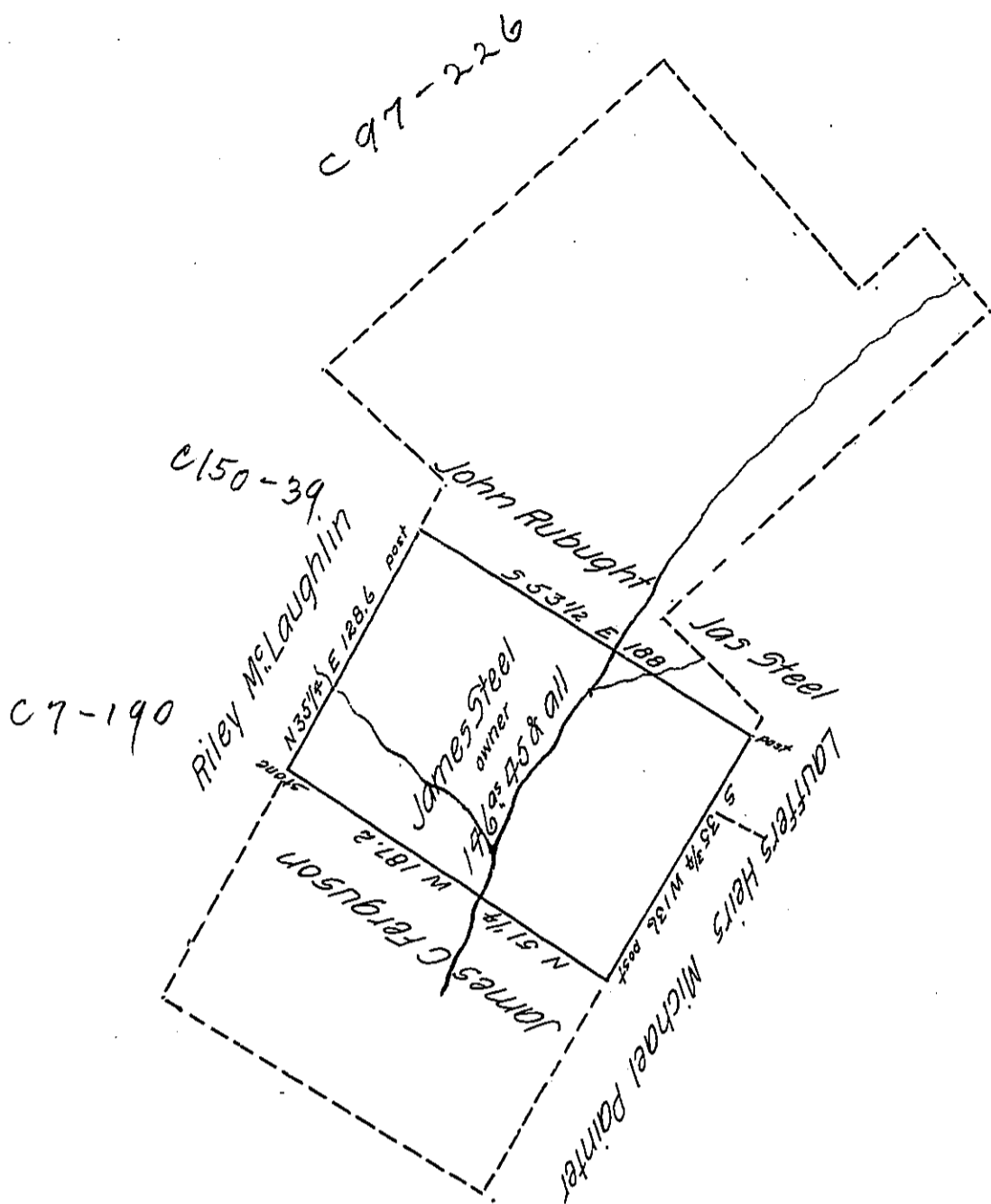


FORM No. 1.



Draft of a tract of land situated in Franklin Township Westmoreland County containing 146 acres and 45 perches and allowances of six per cent for roads &c surveyed for James H Steele the 20th day of June 1873 being part a larger tract of 536 acres and 78 perches and allowance originally surveyed in pursuance of two warrants dated May 26th 1773 granted to John & Mary Menoch

To Robert B Beath
Surveyor General

Cyrus T Long C.S.
By D S Ferguson

I certify the above to be correct and that it corresponds substantially with official papers now in my office

Cyrus T Long C.S.

IN TESTIMONY that the above is a copy of the original remaining on file in the Department of Internal Affairs of Pennsylvania, made conformably to an Act of Assembly approved the 16th day of February, 1833, I have hereunto set my Hand and caused the Seal of said Department to be affixed at Harrisburg, this eighteenth day of April 1906

Isaac D Brown
Secretary of Internal Affairs.